

**General Description.**

Series ZRE pilot operated check valves are designed for maximum flow rates and long life time.

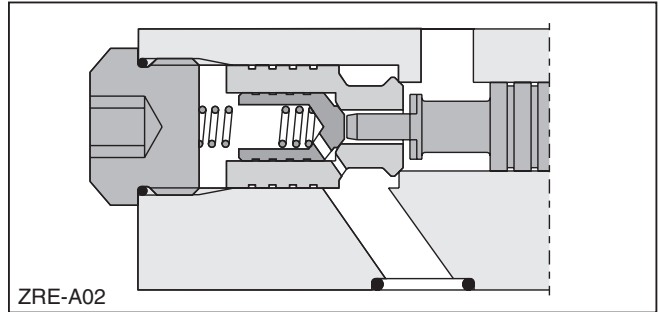
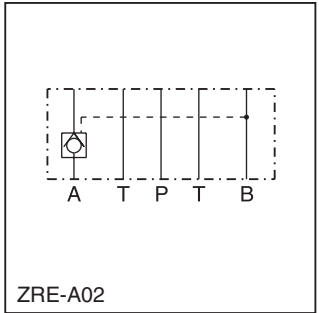
The valves are typically used in combination with spool type directional control valves to ensure leak free positioning of the actuator.

The inlet flow is free while the outlet flow is blocked. Pressure in the inlet line opens the check valve and allows free outlet flow.

**B**

**Features**

- High life time.
- Check function in A, B or A + B.
- Sizes:
  - ZRE01 – NFPA D03 / NG6 / CETOP 3
  - ZRE02 – NFPA D05 / NG10 / CETOP 5

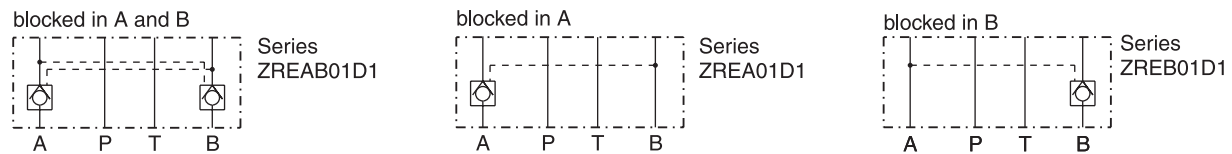


**Ordering Information**

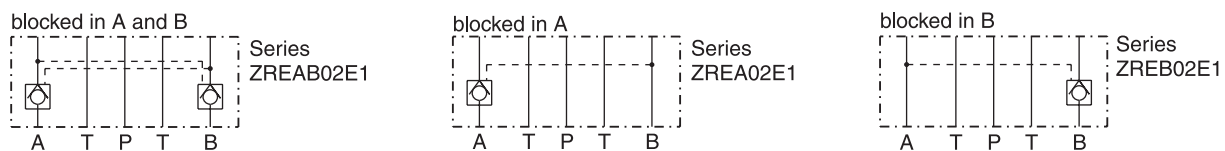
<b>ZRE</b>	□	□	□	□																										
Pilot Operated Check Valve	Port Option	Size	Design Series	Seal																										
<table border="1"> <thead> <tr> <th>Code</th> <th>Description</th> </tr> </thead> <tbody> <tr> <td>A</td> <td>Blocked in A</td> </tr> <tr> <td>B</td> <td>Blocked in B</td> </tr> <tr> <td>AB</td> <td>Blocked in A and B</td> </tr> </tbody> </table>	Code	Description	A	Blocked in A	B	Blocked in B	AB	Blocked in A and B	<table border="1"> <thead> <tr> <th>Code</th> <th>Description</th> </tr> </thead> <tbody> <tr> <td>01</td> <td>NFPA D03 / NG6</td> </tr> <tr> <td>02</td> <td>NFPA D05 / NG10</td> </tr> </tbody> </table>	Code	Description	01	NFPA D03 / NG6	02	NFPA D05 / NG10	<table border="1"> <thead> <tr> <th>Code</th> <th>Description</th> </tr> </thead> <tbody> <tr> <td>D</td> <td>Size 01</td> </tr> <tr> <td>E</td> <td>Size 02</td> </tr> </tbody> </table>	Code	Description	D	Size 01	E	Size 02	<table border="1"> <thead> <tr> <th>Code</th> <th>Description</th> </tr> </thead> <tbody> <tr> <td>1</td> <td>Nitrile</td> </tr> <tr> <td>5</td> <td>Fluorocarbon</td> </tr> </tbody> </table>	Code	Description	1	Nitrile	5	Fluorocarbon	
Code	Description																													
A	Blocked in A																													
B	Blocked in B																													
AB	Blocked in A and B																													
Code	Description																													
01	NFPA D03 / NG6																													
02	NFPA D05 / NG10																													
Code	Description																													
D	Size 01																													
E	Size 02																													
Code	Description																													
1	Nitrile																													
5	Fluorocarbon																													

**Weight:**  
 ZRE\*01 1.2 kg (2.6 lbs)  
 ZRE\*02 3.1 kg (6.8 lbs.)

**ZRE01**



**ZRE02**



**WARNING:** This product can expose you to chemicals including Lead, Nickel (Metallic), or 1,3-Butadiene which are known to the State of California to cause cancer, and Lead or 1,3-Butadiene which is known to the State of California to cause birth defects and other reproductive harm. For more information go to [www.P65Warnings.ca.gov](http://www.P65Warnings.ca.gov).

**Specifications**

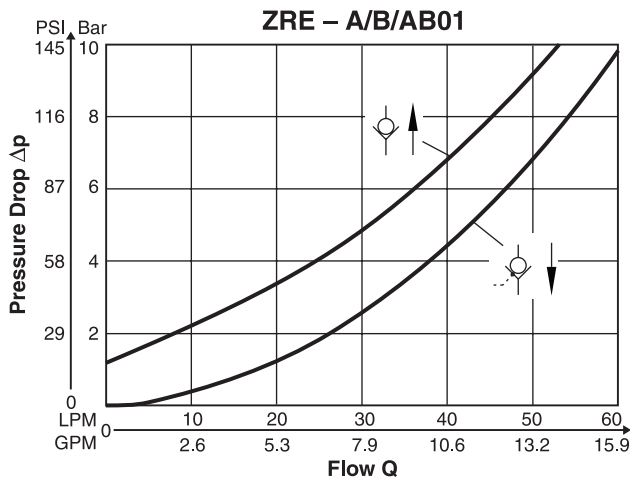
General		
<b>Size</b>	<b>NG6</b>	<b>NG10</b>
<b>Mounting Interface</b>	DIN 24340 A6 ISO 4401 NFFA D03 CETOP RP 121	DIN 24340 A10 ISO 4401 NFFA D05 CETOP RP 121 5
<b>Mounting Position</b>	Unrestricted	
<b>Ambient Temperature</b>	-20°C to +50°C (-4°F to +122°F)	
Hydraulic		
<b>Max. Operating Pressure</b>	350 Bar (5075 PSI)	
<b>Nominal Flow</b>	60 LPM (15.9 GPM)	120 LPM (31.7 GPM)
<b>Opening Ratio (Pilot Cone/Main Cone)</b>	1:6	1:6
<b>Cracking Pressure</b>	1.2 Bar (17.4 PSI)	2.0 Bar (29.0 PSI)
<b>Fluid</b>	Hydraulic oil in accordance with DIN 51524 ... 51525	
<b>Fluid Temperature</b>	-20°C to +80°C (-4°F to +176°F)	
<b>Viscosity</b>	10 to 650 cSt / mm <sup>2</sup> /s (46 to 3013 SSU)	
<b>Permitted</b>	30 cSt / mm <sup>2</sup> /s (139 SSU)	
<b>Recommended</b>		
<b>Filtration</b>	ISO 4406 (1999) 18/16/13 (acc. NAS 1638: 7)	

**B**

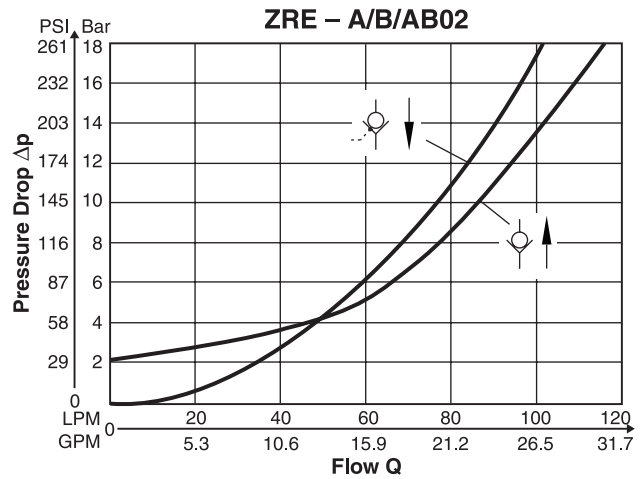
**Performance Curves**

**p/Q**

**ZRE01**



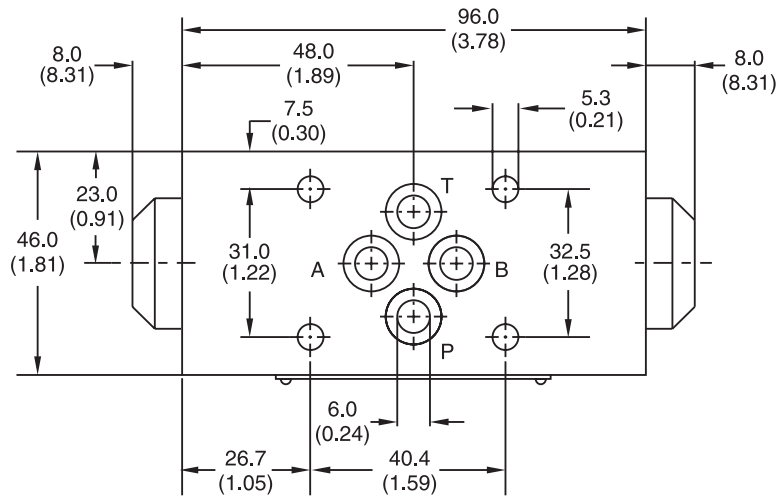
**ZRE02**



Fluid Viscosity 30 cSt at 50°C (122°F).

**ZRE01**

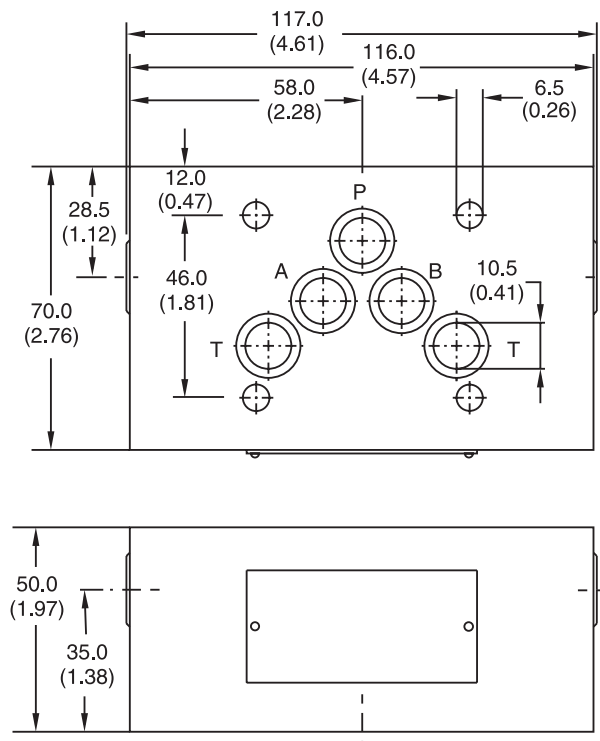
Inch equivalents for millimeter dimensions are shown in (\*\*)



Seal Kit	
Seal	Order Code
1	098-91088-0
5	098-91089-0

**ZRE02**

Inch equivalents for millimeter dimensions are shown in (\*\*)



Seal Kit	
Seal	Order Code
1	098-91090-0
5	098-91091-0

